



# ARKEN

## Bygg Materials



**"Complete Ceiling Accessory Solutions — Delivered with Precision."**

**[www.abmnordic.com](http://www.abmnordic.com)**

**E-Mail: [contact@abmnordic.com](mailto:contact@abmnordic.com) / Mob: +46732406557.**

# INTRODUCTION

With over 5 years of established presence in the UAE construction industry, we are a trusted local supplier of high-quality ceiling and wall access panels, GI (galvanized iron) profiles, wall liner U brackets, and other essential accessories for drywall and ceiling systems. Our manufacturing unit in Mumbai, India, support us for introducing any new developments for market requirements. Our Tool room, Zinc Plating, Powder coating sections add more precision & finishing to our components. We proudly serve a broad spectrum of projects across the UAE—from commercial towers and residential developments to retail, hospitality, and industrial facilities. Our products are engineered for durability, precision, and ease of installation, helping project teams achieve efficient and professional results. We supply access panels that ensure clean and secure access to MEP services, and GI profiles that provide strong, corrosion-resistant structural support for suspended ceilings and drywall partitions. Our range of wall liner U brackets is specially designed for drywall partitioning, offering secure and stable fixing of vertical studs to walls—ideal for high-traffic areas and robust partition designs. All our offerings comply with relevant EU standards, ensuring they meet the highest levels of safety, quality, and performance.

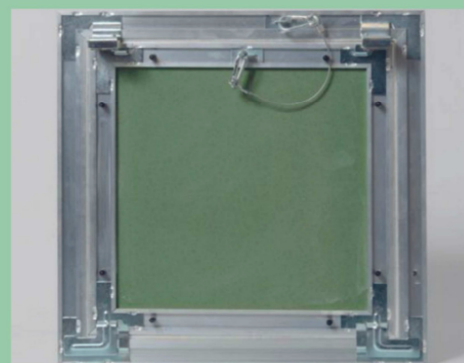
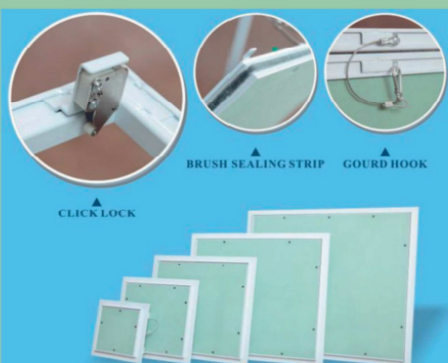
# GYPSUM BOARD ACCESS PANELS



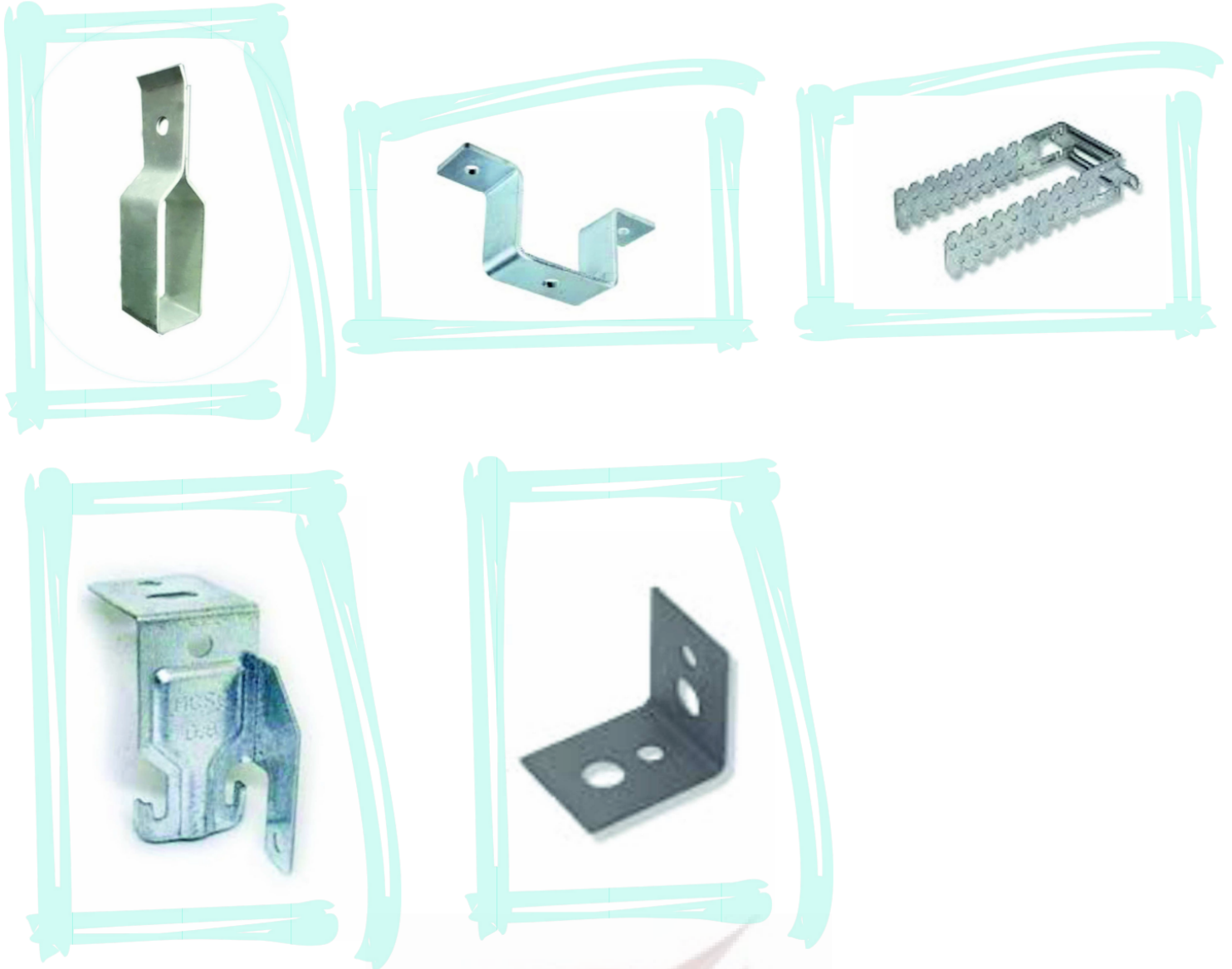
We, ABM, specialize in the supply of premium ceiling access panels designed to meet the highest standards of quality, safety, and functionality. Whether you require standard dimensions or custom-built sizes, we deliver precisely what your project demands—without compromise.

Every access panel we provide is built with attention to detail:

- ✓ High-grade locks for secure closure
- ✓ Safety chains with hooks for added protection
- ✓ Protective rubber screw caps to ensure a clean, durable finish, from residential fit-outs to large-scale commercial installations, we are committed to providing solutions that combine robust performance with professional-grade reliability. When you choose ABM, you choose lasting quality—engineered for safety, tailored for your space.



# Ceiling & Partition Components

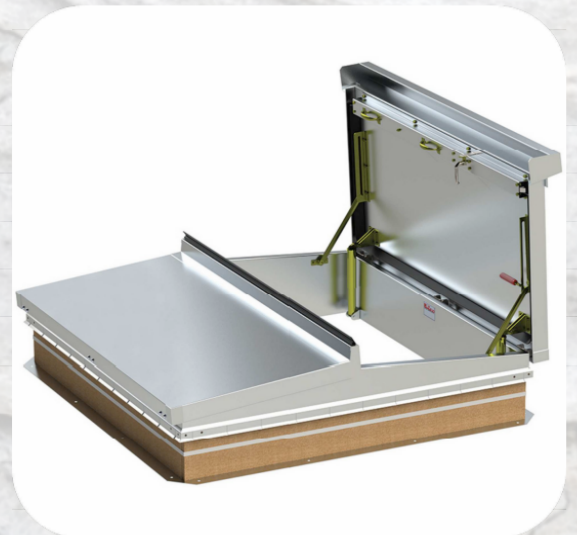


**We manufacture & supply large variety of accessories for ceilings & partitions.**

**www.abmnordic.com** E-Mail: [contact@abmnordic.com](mailto:contact@abmnordic.com) / Mob: +46732406557.

# ***ACCESS DOORS***

## **FOR ROOF & WALL**

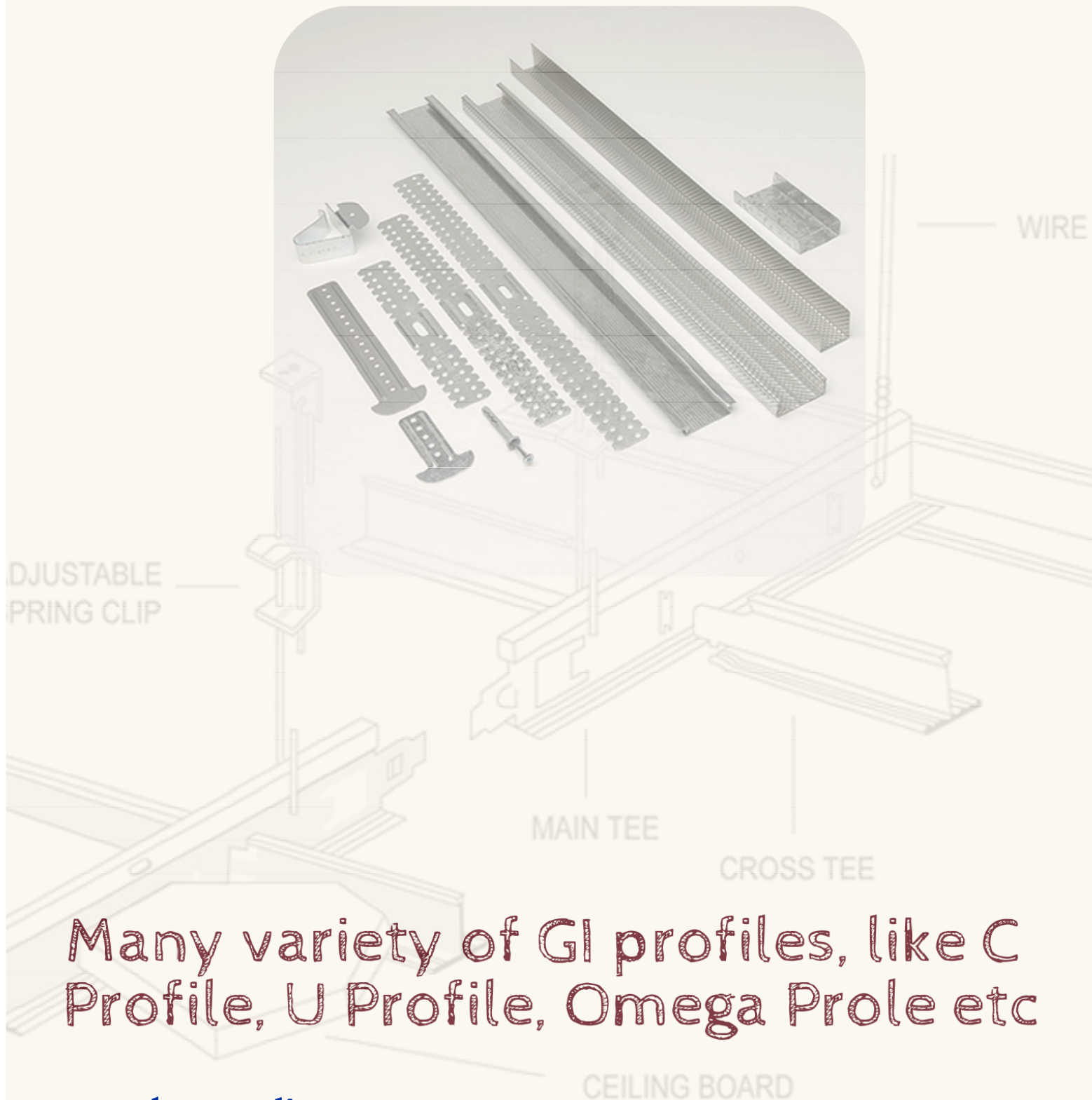


***Types & Designs, to meet any requirements.***

[www.abmnordic.com](http://www.abmnordic.com)

E-Mail: [contact@abmnordic.com](mailto:contact@abmnordic.com) / Mob: +46732406557.

# GI PROFILES FOR CEILING & PARTITIONS



Many variety of GI profiles, like C Profile, U Profile, Omega Profile etc

# PIPES, TUBES & FITTINGS



Stainless steel / Mild Steel pipes & tubes of various sizes and shapes.

# ARKEN

## Bygg Materials



[www.abmnordic.com](http://www.abmnordic.com)

E-Mail: [contact@abmnordic.com](mailto:contact@abmnordic.com) / Mob: +46732406557.